



Discover
the real Japanese
countryside

SALES PACK 2022

Jan.— Dec.2022

SATOYAMA EXPERIENCE

What's New!

✓ SATOYAMA STAY

p.25

Guests can not only enjoy our tours but also stay in our accommodation!

✓ New Tours

E-BIKE & HIKE

p.13

HIDA CUISINE COOKERY CLASS

p.20

HIDA CAMPING TOUR

p.21

✓ Private Guided Tours

Private tours have recently become more popular, due to Covid-19, so we focus on these to a greater extent than before.

Besides our regular Private tours, we are delighted to customise, offering short tours, day trips and even multi-day tours. All with maximum flexibility regarding route and timing, according to your clients' wishes. Let us know your clients' interests and our custom tour staff will be happy to help plan the perfect trip for them.

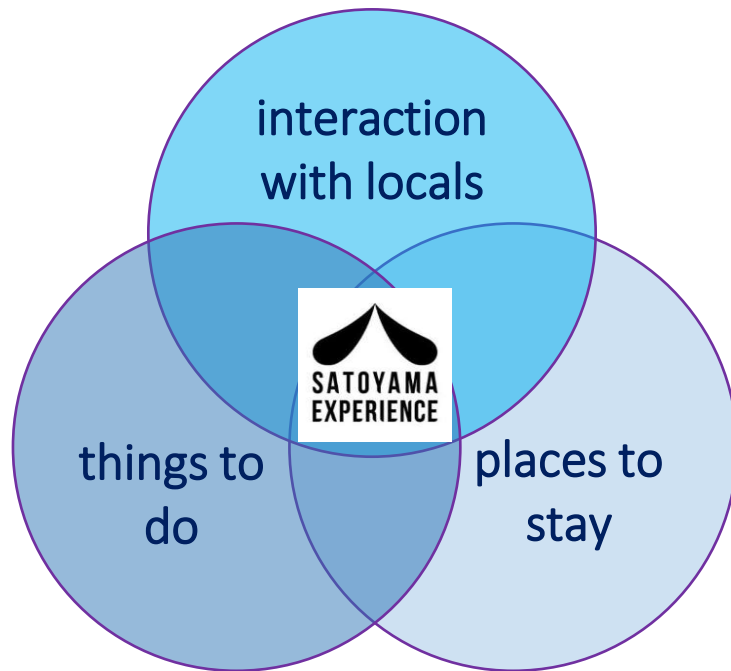
See “BESPOKE TRAVEL ARRANGEMENTS” on pages 39 to 43 for more details.



WHAT IS SATOYAMA EXPERIENCE?

SATOYAMA EXPERIENCE is a one-stop service to support travelers seeking authentic and unique experiences in Takayama.

We have offered guided tours and a travel arrangement service since 2010, and launch our new B&B accommodation in summer 2020. All our services are designed to connect travelers with locals.



WHY SATOYAMA EXPERIENCE?

✓ Top ranked activity since 2010

We have been the only travel agency/tour operator in Takayama focusing on travelers from overseas for over **10 years** and are recognized as a leading company in our field. The owners are highly experienced travelers with an in-depth understanding of global tourism trends.

- **1000+** TripAdvisor "Excellent" Reviews
 - **99%** Positive Feedback
- lonely planet TOP CHOICE



✓ Places to stay and things to do in one place

From 2020, SATOYAMA EXPERIENCE can offer both places to stay and things to do in the Takayama area. Guests have the full range of SATOYAMA EXPERIENCE services at their fingertips.

✓ Connect to locals

"STAY LOCAL, DO LOCAL, FEEL LOCAL"

Interaction with local people gives travelers an authentic taste of Japanese hospitality. Our accommodation and tours are designed to connect travelers with locals.



✓ Enthusiastic and friendly guides

Our guides and reception staff all speak English, live locally, are friendly, and have unique personal histories!



✓ Small group and bespoke tours

Our guests are **99% FIT** and our regular tour groups run with a **maximum of 8 participants**. We are constantly adding to our range of private tours. Bespoke tours can be arranged in consultation with guests, even on site.

✓ Locally owned and operated

We are an independent, locally owned and operated company, and we take great pride in making guests' stay in the Hida area unforgettable



✓ Sustainability

We are members of Travelife and are actively engaged in taking the necessary steps towards complying with international sustainability standards

WHY TAKAYAMA ?



★★★★ Michelin Green Guide
Best in Asia 2017(Lonely Planet)



- ✓ Located in central Japan, 4 hours from Tokyo or Kyoto
- ✓ Surrounded by beautiful mountains
- ✓ Spectacular rural scenery

Takayama is an increasingly popular destination for overseas visitors to Japan. Often referred to as “Little Kyoto”, it is a peaceful and charming town, full of cultural treasures and magnificently situated in the Japanese Alps.

OUR OFFICE / TOUR DESK

Our main office is in Hida-Furukawa while our tour desk is in the TAKAYAMA iCAFÉ on the ground floor of the JR Takayama station building. Your clients are welcome to drop in for a chat and some helpful advice!

HIDA FURUKAWA OFFICE

@SATOYAMA STAY NINO-MACHI



Our Hida Furukawa office is located in SATOYAMA STAY NINO-MACHI. Reception here is the check-in point for all guests, whether they come to stay with us or for tours.

11-32 Ninomachi, Furukawa-cho, Hida City, Gifu, Japan,
509-4235

iCAFÉ TAKAYAMA TOUR DESK

@Takayama Station



Our Takayama tour desk offers a concierge service, taking personal care of your clients and supporting their comfortable stay in the Takayama area. Tickets and documents can be passed to your clients via our tour desk at:

22-2 1-Chome, Shōwamachi,
Takayama City, Gifu, Japan
506-0053

INDEX

GUIDED TOURS

- HIDA SATOYAMA CYCLING p.9
- CRAFTS, CUISINE & CULTURE p.15
- WINTER TOURS p.22

SATOYAMA STAY p.25

BESPOKE TRAVEL ARRANGEMENTS p.39

PRACTICAL INFORMATION p.44





GUIDED TOURS

Discover the heart of Japan with us



HIDA SATOYAMA CYCLING

Connecting you with local lifestyles and landscapes

STANDARD

MTB

Private

Group

Take the time to immerse yourself in the authentic Japanese countryside, encountering traditional rural lifestyles through interacting with locals and experiencing the beauty of nature.

Duration	Time / Date	Meeting Point	Includes
3.5 hrs	<AM> 9:00 - 12.:30 (Mar 20 - Nov 30)	Hida Furukawa Office	Trained and experienced guide (in English) Mountain Bike Helmet Rain gear (Japanese size: S, M, L) –only if needed Tea break
	<PM> * 14:00 - 17:30 (Mar 20 – Sept 30) 13:15 – 16:45 (Oct 1 – Oct 31)		

*Afternoon group tours only run until Sept.30 due to the shorter daylight hours. During October, private afternoon tours run from 13:15 – 16:45. If you prefer an afternoon group cycling tour, our HALF tour is available from Oct.1 to Nov.30.

*If there are children under 135cm or infants with a child seat, please book our “HALF” tour.



Chura-boshi – the beautiful planet on which we live
© 2007 Chura-boshi Company

HALF

MTB

Private

Group

Experience Hida's highlights in a shorter tour on flatter terrain which lets you discover traditional rural lifestyles through interaction with locals and showcases the beauty of nature. An alternative to our Standard tour, suitable for those who might have less time, less energy or young families.

Duration	Time /Date	Meeting Point	Includes
2.5 hrs	<AM> 10:15 - 12:45 (Mar 20 – Dec 20)	Hida Furukawa Office	Trained and experienced guide (in English) Mountain Bike Helmet Rain gear (Japanese size: S, M, L) –only if needed Tea break
	<PM> 14:00 - 16:30 (Mar 20 – Nov 30) 13:45 – 15:45 (Dec 1 - Dec.20)		

*Afternoon group tours available only from Oct.1 to Nov.30.



Chura-boshi – the beautiful planet on which we live
© 2007 Chura-boshi Company

RIDE & HIKE

A moderately challenging combination of cycling and a short hike in the woods. Recommended for more adventurous participants. After the cycling section, the tour involves hiking through a forest which forms the backyard of a temple. Numerous stone buddahs are a feature of this trail, which is 4km in length with an altitude gain of 270m. Participants can enjoy panoramic views of the Japanese Alps from the highest point. A local packed lunch is provided.

Duration	Time/ Date	Meeting Point	Includes
5.5 hrs	10:15 - 15:45 (May 1 – July 15 Aug 21 – Sep 30 Oct 16 – Oct 31)	Hida Furukawa Office	Trained and experienced guide (in English) Mountain Bike Helmet Lunch (bento box) & tea break Rain gear (Japanese size: S, M, L) –only if needed

* This tour does not run during the hot summer period due to its physical nature and the summer heat.



E-BIKE & HIKE (former RIDE & HIKE)

This tour is a combination of E-bike cycling and a short hike in the woods. Recommended for adventurous participants. The easy hike passes several impressive, individually named waterfalls in a 2km-long route with an altitude gain of 170m. The cycling section includes a challenging long slope, 4.5km in length with an altitude gain of 200m, assisted by use of an E-bike. A broad panorama of the Japanese Alps is a feature of the forest hike. A local packed lunch is provided.

Duration	Time/ Date	Meeting Point	Includes
5.5 hrs	10:15 - 15:45 (May 1 – July 15 Aug 21 – Sep 30 Oct 16 – Oct 31)	Hida Furukawa Office	Trained and experienced guide (in English) E-Bike Helmet Lunch (bento box) & tea break Rain gear (Japanese size: S, M, L) –only if needed

* This tour does not run during the hot summer period due to its physical nature and the summer heat.



Full Day Tour

FOOD WALK + CYCLING

Private

A morning town walk in Takayama seeks out traditional shops where you can try a myriad of local delicacies and sake. After lunch with your guide, travel together to Hida-Furukawa, where our cycling tour will showcase the essence of local rural lifestyles, culture and nature.

Duration	Time /Date	Meeting Point	Includes
6 hrs	10:00 - 16:00 (Mar 20 - Dec 20)	Entrance gate of Takayama Jinya	Trained and experienced guide (in English) Local food & sake tasting Taxi from Takayama to Hida-Furukawa Mountain Bike; Helmet Lunch at a traditional local restaurant Rain gear (Japanese size: S, M, L) –only if needed



Chura-boshi – the beautiful planet on which we live
© 2007 Chura-boshi Company



Crafts, Cuisine & Culture

Guided Discoveries of History, Culture, Crafts, Food and More

FOOD WALK

Private

Group

The tofu seller, sake brewery, Japanese sweets shop...and many more. Takayama remains deeply rooted in its local culture and history, with daily life still revolving around the longstanding traditional shops you will experience and sample from on this tour.

Duration	Time /Date	Meeting Point	Includes
2.5 hrs	9:30 - 12:00 *Private Tour 9:00 – 11:30 All year round (tour does not run from Dec 31 – Jan 4)	Entrance gate of Takayama Jinya	Trained and experienced guide (in English) Local food & sake tasting Tea break



Chura-boshi – the beautiful planet on which we live
© 2007 Chura-boshi Company

CRAFT WALK

Takayama is renowned for its variety and quality of crafts, notably woodwork, pottery and textiles. Experience the full richness and diversity of Takayama's craft culture in this guided exploration of the Old Town, showcasing genuine crafts made in the traditional manner.

Duration	Time /Date	Meeting Point	Includes
2.5 hrs	14:00 - 16:30 All year round (tour does not run from Dec 31 – Jan 4)	Entrance gate of Takayama Jinya	Trained and experienced guide (in English) Tea break



Chura-boshi – the beautiful planet on which we live
© 2007 Chura-boshi Company

THE ART OF CRAFTSMANSHIP WALK

Private

Intricate yet imposing, the stunningly beautiful festival floats of Takayama have attained recognition as part of the national heritage of Japan. This tour allows participants a rare insight into the highly skilled work behind the majesty of the floats, through meeting the craftsmen who maintain them and observing the traditional techniques employed in these artworks. The tour concludes with a visit to the Festival Floats Museum to see the 'finished product'!

Duration	Time /Date	Meeting Point	Includes
2.5 hrs	Dependent on the craftsmen's schedule * All year round Tour does not run from Dec 25 – Jan 9)	In front of iCafe TAKAYAMA (Ground floor of TAKAYAMA station)	Trained and experienced guide (in English) Festival Floats Museum admission fee Tea break

- In view of the craftsmen's working schedule, the studios we visit and the timings of the tour will differ. To book, please send us a request specifying morning or afternoon.



HIDA-FURUKAWA TOWN WALK

Set in a beautiful valley encircled by tree-lined hills, Hida-Furukawa has maintained the traditional small town feel of rural Japan. Highlights include impressive temples; sake breweries; the Setogawa canal, full of giant carp in the warmer months; and the museum devoted to Furukawa's pride and joy, its festival. But most of all, there is no better place to experience the slow-paced rhythms of traditional Japanese rural life.

Duration	Time	Meeting Point	Includes
2.5 hrs	14:00 - 16:30 All year round (tour does not run from Dec 31 – Jan 4)	Hida Furukawa Office	Trained and experienced guide (in English) Festival Hall admission fee Tea break



Chura-boshi – the beautiful planet on which we live
© 2007 Chura-boshi Company

NEW!

HIDA CUISINE COOKERY CLASS

Private

Group

Learn how to make typical Hida dishes using fresh local ingredients, drawing on the food culture handed down through generations. The precise dishes made will vary depending on the season, with the exception of miso soup; no Japanese meal is complete without that! After the cookery experience, guests can enjoy the fruits of their efforts. Typical menu: miso soup with seasonal vegetables, pan-fried chicken with cabbage, potatoes with egoma (perilla seeds) sauce and rice.

Duration	Time	Meeting Point Venue	Includes
2.5 hrs	10:00 - 12:30 All year round (class does not run from Dec 31 – Jan 4)	Hida Furukawa Office / Cooking Studio at SATOYAMA STAY	Trained and experienced guide (in English) Lunch

*If participants have any dietary restrictions, please book a private class.



Chura-boshi – the beautiful planet on which we live
© 2007 Chura-boshi Company

HIDA CAMPING TOUR (1 night/2 days)

Our camping tour is perfect for those who love nature and outdoor activities.

The tour lasts 2 days, including dinner, breakfast with a variety of local foods from the Hida region, and all necessary camping equipment. Home to the Japanese Alps, amongst other high mountains, Hida has a range of camping sites surrounded by beautiful nature. Depending on the season, a variety of activities in nature can be enjoyed, including forest walking, river swimming and onsen bathing. Pitching their own tent also provides a fun challenge for guests! As we supply all required camping equipment, guests on this tour don't need to bring any specialised gear.

Duration	Time	Meeting Point Venue	Includes
2 days (1 night)	14:00 - 11:00 (next day) (May 1 – Oct 15)	Hida Furukawa Office	Trained and experienced guide (in English) BBQ dinner Breakfast All camping equipment

Schedule*

DAY 1

- 14:00 Reception at Hida Furukawa Office
- 14:30 Transfer to the campsite / Set up the tent
- 15:30 Self-guided activity (swimming in the river, forest walking, onsen bathing, etc)
- 17:30 BBQ dinner

DAY 2

- 07:30 Breakfast
- 09:30 Pack up the tents
- 11:00 Back to the office and tour ends

* The above schedule is an example. We will organise the best schedule depending on campsite and season.





WINTER TOURS

Experience a winter wonderland of abundant snow, close-up encounters with nature and spectacular mountain vistas

JAPAN ALPS SNOWSHOEING

Experience the Hida winter close up in a forest of the northern Japanese Alps. From Takayama, bus then cable car transport you to a stunning mountainous setting for a 2-hour guided snowshoeing exploration, after which you can take the upper cable car to an altitude of 2150 metres for the best panoramic view of the Japanese Alps.

Duration	Time	Meeting Point	Includes
3 hrs*	8:30 - 13:00 Jan 10 - Feb 27	Takayama Nouhi Bus Center	Trained and experienced guide (in English) Return bus tickets from Takayama Boots & outerwear Snowshoes and walking poles Ropeway ticket & 1,000 yen meal coupon Warm tea

*Children over 10yrs can join the tour. We only have boots from 22.5cm up to 29cm in size.

*Please note that this tour may not operate depending on the snow conditions.

*Please note that this timing relates to the guided part of the tour. The round trip can take 8hrs if guests are coming from Takayama. See the schedule below.

*If guests plan to stay in the Okuhida area, please contact us for a quote.

Schedule

8:30 Reception at Nouhi Bus Center
 8:40 Take a bus to Shinhotaka
 10:15 Arrive at Shinhotaka
 10:20 Meet your guide at Shinhotakaonsen Station 1st Floor
 10:30 Take the ropeway (lower)
 11:00 Start snowshoeing
 13:00 Finish snowshoeing

After the tour, we recommend taking the ropeway (upper) to experience a panoramic view of the Japanese Alps.



SATOYAMA SNOWSHOEING

Private

Group

This tour combines the best of both worlds, allowing us to experience nature close up while never far from human habitation in a village setting. We visit snow-covered fields, where you can look out for animal footprints, as well as an apple orchard, showcasing both nature and the way local people live closely in harmony with it.

Duration	Time	Meeting Point	Includes
2.5 hrs	13:00 - 15:30 Jan 6 – Feb 27	Hida Furukawa Office	Trained and experienced guide (in English) Boots & outerwear Snowshoes and walking poles Tea break Transportation

*Children over 6 yrs can join the tour. We only have boots from 24cm up to 29cm in size.

*Please note that this tour may not operate depending on the snow conditions.



Chura-boshi – the beautiful planet on which we live
© 2007 Chura-boshi Company



SATOYAMA STAY

The new B&B accommodation in Hida-Furukawa produced by SATOYAMA EXPERIENCE, designed to connect travelers with locals.

WHY STAY WITH US?



Centrally located in Hida Furukawa

Hida Furukawa is a peaceful, atmospheric [small town, 20 minutes from Takayama](#). Perfect for guests who like to avoid busy tourist towns and experience local daily life in all its facets. (N.B. Dinner is not served in our accommodation, allowing guests to visit local restaurants for a taste of daily life in Hida Furukawa. Please ask us for dining suggestions.)



Customized Experience

Guests have the full range of SATOYAMA EXPERIENCE services at their fingertips. We are delighted to arrange a variety of activities, from cycling and walking tours to Shirakawa-go day trips. Guests may have the chance to enjoy [special experiences](#), such as tea ceremony and music performances by local residents.



Modern Machiya* style with local arts & crafts

SATOYAMA STAY NINO-MACHI is [newly built in traditional style](#) using local timber by the highly skilled carpenters of Hida. All rooms are individually appointed with [artisan furniture](#) made by local craftsmen. The communal areas feature a wall adorned with ceramic Japanese characters, crafted by a local potter.

*A Machiya is a traditional Japanese townhouse, with a dual purpose as a shop, commonly found in merchant towns over centuries.

Features of our Accommodation

ROOMS



Enjoy traditional Japanese-style rooms, enhanced with modern comforts.

- ✓ all equipped with shower, toilet and double-glazed windows
- ✓ traditional Japanese tatami flooring and comfortable beds

WORKSHOP ROOM



The NINO-MACHI building boasts a workshop room in which we plan to offer a variety of learning opportunities and events, including...

- ✓ Cookery class
- ✓ Calligraphy class
- ✓ Japanese manners class
- ✓ Entertainment by locals

Features of our Accommodation

FAMILY FRIENDLY



We are always happy to accommodate families.

- ✓ Plenty of things to do with kids, including cycling and cooking!
- ✓ Children under 6 stay free of charge when using an existing bed
- ✓ Children under 12 stay for only 5,000 yen/pp with bed, all year round

BREAKFAST



Breakfast will be created by a local chef and served in the dining hall of our NINO-MACHI building

- ✓ We serve local, organic and seasonal food wherever possible
- ✓ As well as local Hida cuisine, we serve western-style food such as bread, yogurt and ham

LOCATION

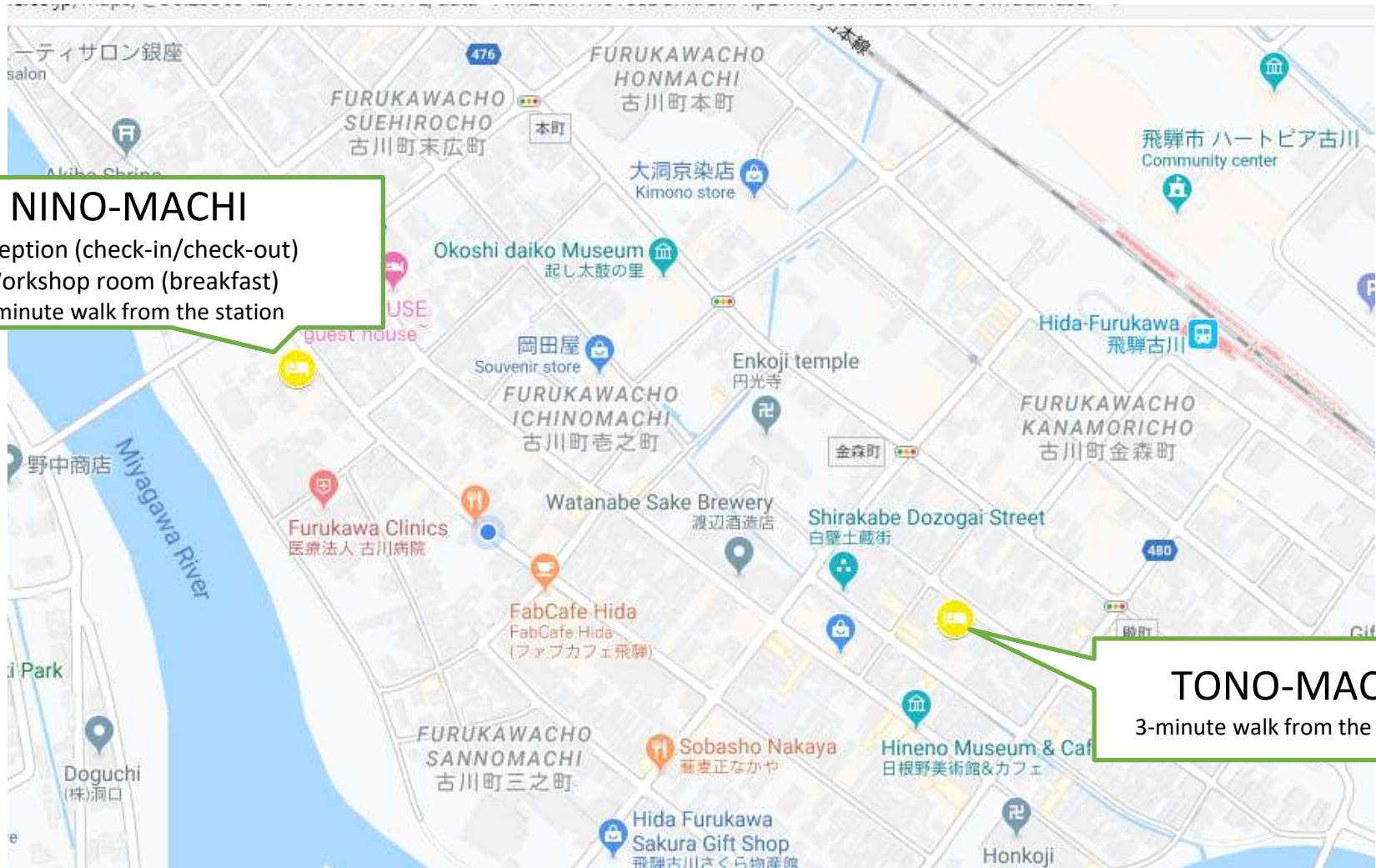
We have two places to stay, both centrally located in the old town area of Hida Furukawa.

NINO-MACHI

Reception (check-in/check-out)
Workshop room (breakfast)
8-minute walk from the station

TONO-MACHI

3-minute walk from the station



SATOYAMA STAY NINO-MACHI

- With RECEPTION service for all stays and tours



- ✓ Newly built in traditional style using local timber by the highly skilled carpenters of Hida
- ✓ 3 rooms in the main building, plus cosy cottage, created through renovation of a 100-year-old storehouse
- ✓ Breakfast venue / Workshop room / Cooking studio
- ✓ Artisan furniture by local craftsmen
- ✓ Prime viewing spot for the Furukawa Festival on the evening of April 19th. Watch until midnight from the upstairs corridors
- ✓ Laundry machine



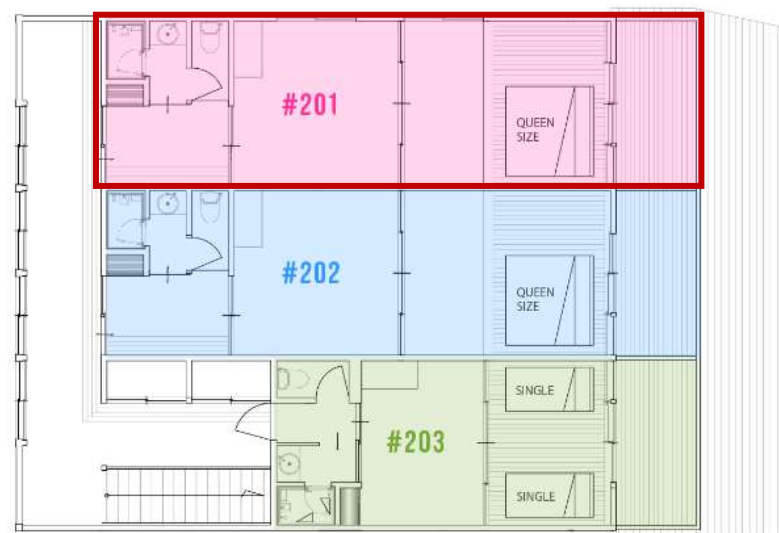
SATOYAMA STAY NINO-MACHI

-ROOMS-

#201:

Corner rooms with south-facing terrace looking out on the small garden and Kura (storehouse). In order to accentuate the impressive beams in the living room, we designed it without a ceiling. Furnishings include a queen size bed, tatami sofa, low table and low chairs.

2F
SECOND FLOOR



Room Size	40m ²
Facilities	WiFi, air conditioning in both living and sleeping areas, queen bed (160cm x 205cm), electric kettle, mini fridge, en-suite shower room and toilet, safe deposit box
Capacity	min. 2 people / max. 5 people



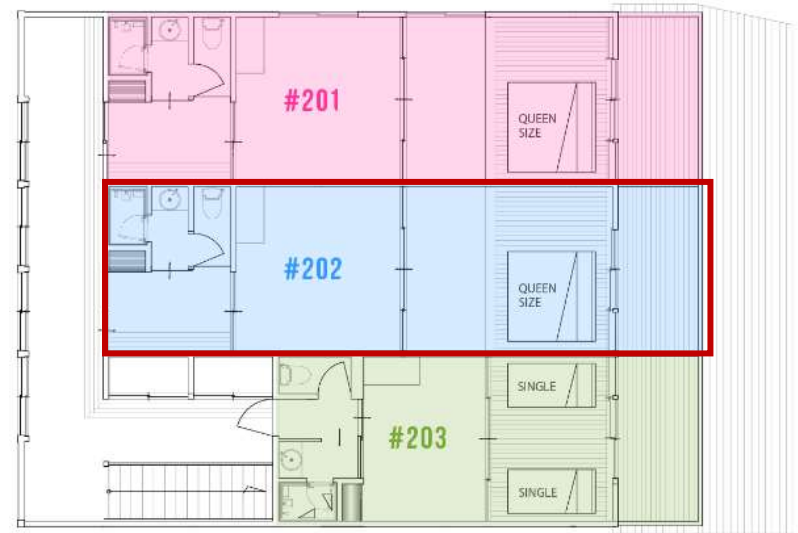
SATOYAMA STAY NINO-MACHI

-ROOMS-

#202:

Rooms with south-facing terrace looking out on the small garden and Kura (storehouse). In order to accentuate the impressive beams in the living room, we designed it without a ceiling. Furnishings include a queen size bed, tatami sofa, low table and low chairs.

2F
SECOND FLOOR



Room Size	40m ²
Facilities	WiFi, air conditioning in both living and sleeping areas, queen bed (160cm x 205cm), electric kettle, mini fridge, en-suite shower room and toilet, safe deposit box
Capacity	min. 2 people / max. 5 people

SATOYAMA STAY NINO-MACHI

-ROOMS-

#203:

Rooms with south-facing terrace looking out on the small garden and Kura (storehouse). The coziest room in SATOYAMA STAY, a skylight in the ceiling lets gentle sunlight in. Furnishings include 2 single beds, a low table and low chairs.

2F
SECOND FLOOR



Room Size	27m ²
Facilities	WiFi, air conditioning in both living and sleeping areas, two single beds (105cm x 205cm), electric kettle, mini fridge, en-suite shower room and toilet, safe deposit box
Capacity	min. 1 person / max. 3 people



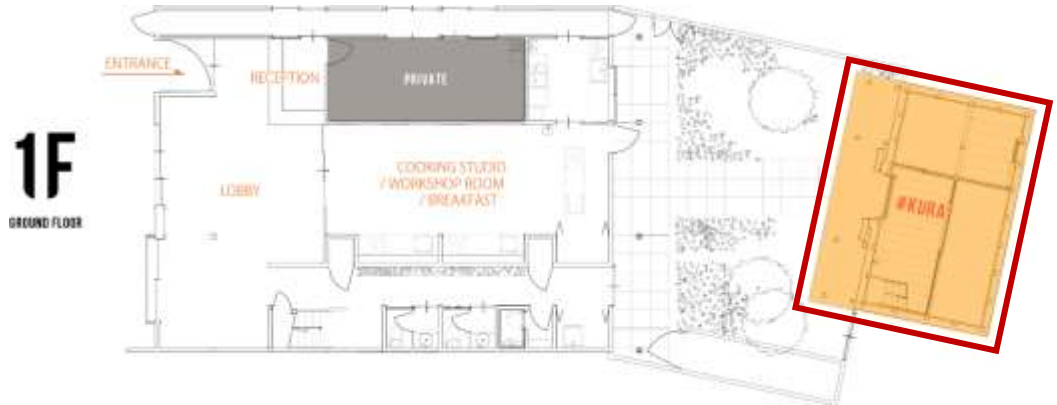
SATOYAMA STAY NINO-MACHI

-ROOMS-

KURA:

Renovated 120-year-old Kura (storehouse). Spacious and bright room facing the small garden. Only room at SATOYAMA STAY with a traditional bathtub. Furnishings include 2 single beds, a low table and low chairs.

Room Size	50m ²
Facilities	WiFi, air conditioning in both living and sleeping areas, two single beds (110cm x 205cm), electric kettle, mini fridge, en-suite bath room and toilet, safe deposit box
Capacity	min. 2 person / max. 5 people



SATOYAMA STAY TONO-MACHI

- Annex for guests only



- ✓ Renovated traditional building
- ✓ Only 3 minutes from the station
- ✓ Self check-in available*
- ✓ 3 spacious rooms of around 40m²
- ✓ Artisan furniture by local craftsmen
- ✓ On the evening of April 19th, guests in #202 can enjoy the Furukawa Festival from their window

* We will send your entrance PIN just before arrival.



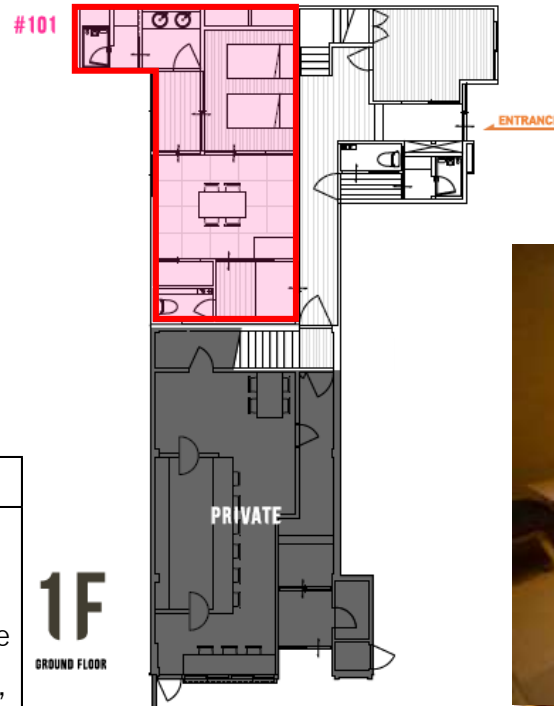
SATOYAMA STAY TONO-MACHI

-ROOMS-

#101:

The largest rooms in our TONO-MACHI building. Open the window and our neighbor's garden is directly outside, just one characteristic of intimate townhouse living with its community feel. Furnishings include two semi-double beds, a low table and low chairs.

Room Size	41m ²
Facilities	WiFi, air conditioning in both living and sleeping areas, two semi-double beds (120cmx195cm), electric kettle, mini fridge, en-suite shower room and toilet, safe deposit box
Capacity	min. 1 person / max. 5 people



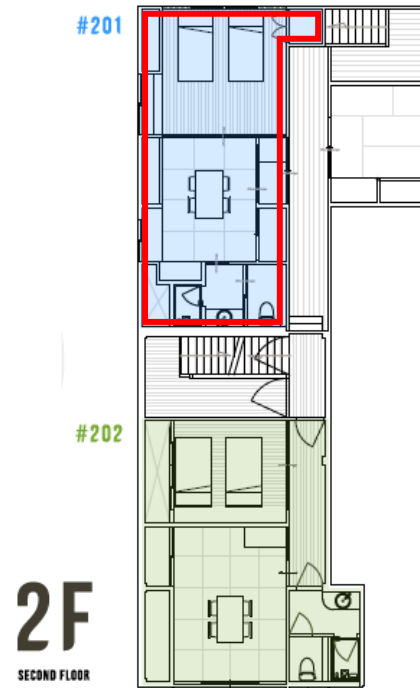
SATOYAMA STAY TONO-MACHI

-ROOMS-

#201:

In these rooms, original features enhance the traditional atmosphere: a “Toko-no-ma” (display space common in old houses), window fittings, sliding screens and decorated walls. Furnishings include two semi-double beds, a low table and low chairs.

Room Size	40m ²
Facilities	WiFi, air conditioning in both living and sleeping areas, two semi-double beds (120cmx195cm), electric kettle, mini fridge, en-suite shower room and toilet, safe deposit box
Capacity	min. 1 person / max. 5 people



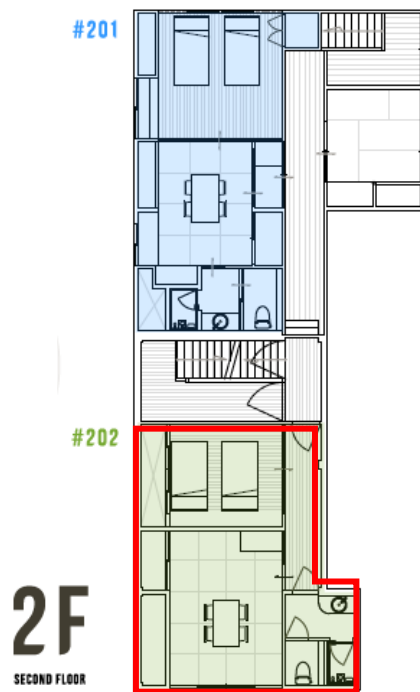
SATOYAMA STAY TONO-MACHI

-ROOMS-

#202:

Bright corner rooms facing the street. During the Furukawa Festival, held annually on the 19th of April, this is the prime spot to experience the sound of the drums and sight of the festival floats parading past your window. Furnishings include two semi-double beds, a low table and low chairs.

Room Size	41m ²
Facilities	WiFi, air conditioning in both living and sleeping areas, two semi-double beds (120cmx195cm), electric kettle, mini fridge, en-suite shower room and toilet, safe deposit box
Capacity	min. 1 person / max. 5 people





BESPOKE TRAVEL ARRANGEMENTS

Stress-Free Countryside Trips

We would love to arrange adventure holidays for your clients!

SATOYAMA STAY will be the ideal base for your clients to get around the Hida area.

Here are some ideas for day trips:

- Full day trip to Shirakawa-go/Gokayama
- Full day trip to Kamikochi
- Hiking in the local mountains
- Swimming in the river like locals do
- Visiting remote villages
- Snowshoeing in the forest

The list of things to do here just goes on and on...

We are delighted to customise short tours, day trips or multi-day tours for your clients, with full flexibility on route and timing.

Let us know your clients' interests and our custom tour staff will be happy to help plan the perfect trip for them.



Chura-boshi – the beautiful planet on which we live

© 2007 Chura-boshi Company

We would love to arrange adventure holidays for your clients!

SATOYAMA STAY will be the ideal base for your clients to get around the Hida area.

Some ideas for day trips

Full day trip to Shirakawa-go/Gokayama

Full day trip to Kamikochi

Hiking in the local mountains

Swimming in the river like locals do

Visiting remote villages

Snowshoeing in the forest

The list of things to do here just goes on and on...

We are delighted to customise short tours, day trips or multi-day tours for your clients, with full flexibility on route and timing.

Let us know your clients' interests and our custom tour staff will be happy to help plan the perfect trip for them.



Chura-boshi – the beautiful planet on which we live

SATOYAMA STAY 3D/2N

Takayama, Hida Furukawa, Shirakawa-go

3 Days / 2 Nights

Overnight:
SATOYAMA STAY

Day 1 Travel to Hida Furukawa / SATOYAMA CYCLING TOUR
In the morning, leave Tokyo/Kyoto and travel to Hida Furukawa by JR train (or bus).
After lunch, join our cycling tour for the best introduction to the local area and its landscapes.

Day 2 Cookery Class / Takayama Visit
Join our cookery class in the morning and enjoy your culinary creations for lunch! In the afternoon, take a train to Takayama and explore the town's museums, shopping and variety of restaurants.

Day 3 Shirakawa-go Visit / Travel to your Next Destination
In the morning, take a bus to Shirakawa-go, the only place in Japan where the traditional masterpieces known as gassho-zukuri houses, with stunning thatched roofs, can be seen in their natural setting. Several of the houses in the village are open to the public.
Shirakawa-go is especially convenient if Kanazawa is the next destination, only 90 minutes away.



SATOYAMA STAY 4D/3N

Takayama, Hida Furukawa, Shirakawa-go

4Days / 3Nights

Overnight:
SATOYAMA STAY

- | | |
|--------------|---|
| Day 1 | <u>Travel to Hida Furukawa / Furukawa Town Walk</u>
In the morning, leave Tokyo/Kyoto and travel to Hida Furukawa by JR train (or bus). After lunch, join our walking tour to learn about local lifestyles and attractions. |
| Day 2 | <u>Cookery Class / Hida Satoyama Cycling</u>
Join our cookery class in the morning and enjoy your culinary creations for lunch! In the afternoon, our scenic cycling tour delves into local agriculture, architecture and culture. |
| Day 3 | <u>Food Walk / Takayama Visit</u>
Take a train to Takayama and join our Food Walk in the morning, meeting local vendors and sampling their produce. The afternoon is free for you to enjoy Takayama's range of museums, shopping and restaurants. For artisan craft lovers, we offer a Craft Walk exploring locally produced pieces. |
| Day 4 | <u>Shirakawa-go Visit / Travel to your Next Destination</u>
In the morning, take a bus to Shirakawa-go, the only place in Japan where the traditional masterpieces known as gassho-zukuri houses, with stunning thatched roofs, can be seen in their natural setting. Several of the houses in the village are open to the public.
Shirakawa-go is especially convenient if Kanazawa is the next destination, only 90 minutes away. |



SATOYAMA STAY 5D/4N

Okuhida Onsen, Takayama, Hida Furukawa, Shirakawa-go

5Days / 4Nights		overnight
Day 1	<u>TRAVEL TO OKUHIDA ONSEN from Tokyo</u> (4.5 hrs) The Okuhida Onsen-go area is situated at the base of the Japanese Alps. Visitors will be able to enjoy the authentic atmosphere of an outdoor onsen bath, with dinner served by a traditional irori fireplace.	Ryokan at Okuhida Onsen
Day 2	<u>Enjoy Takayama</u> After a leisurely morning bath, head to Takayama (1 hr), a town which has retained its Edo-period atmosphere with immaculately preserved old districts, temples, antique shops and sake breweries. Enjoy museums, shopping and restaurants. Travel to Hida Furukawa in the evening.	SATOYAMA STAY
Day 3	<u>Cookery Class / Furukawa Town Walk</u> Join our cookery class in the morning and enjoy your culinary creations for lunch. In the afternoon, take our walking tour to learn about local lifestyles and attractions.	SATOYAMA STAY
Day 4	<u>Hida Satoyama Cycling</u> Join our scenic cycling tour, delving into local agriculture, architecture and culture.	SATOYAMA STAY
Day 5	<u>Shirakawa-go Visit / Travel to your Next Destination</u> In the morning, take a bus to Shirakawa-go, the only place in Japan where the traditional masterpieces known as gassho-zukuri houses, with stunning thatched roofs, can be seen in their natural setting. Several of the houses in the village are open to the public. Shirakawa-go is especially convenient if Kanazawa is the next destination, only 90 minutes away.	



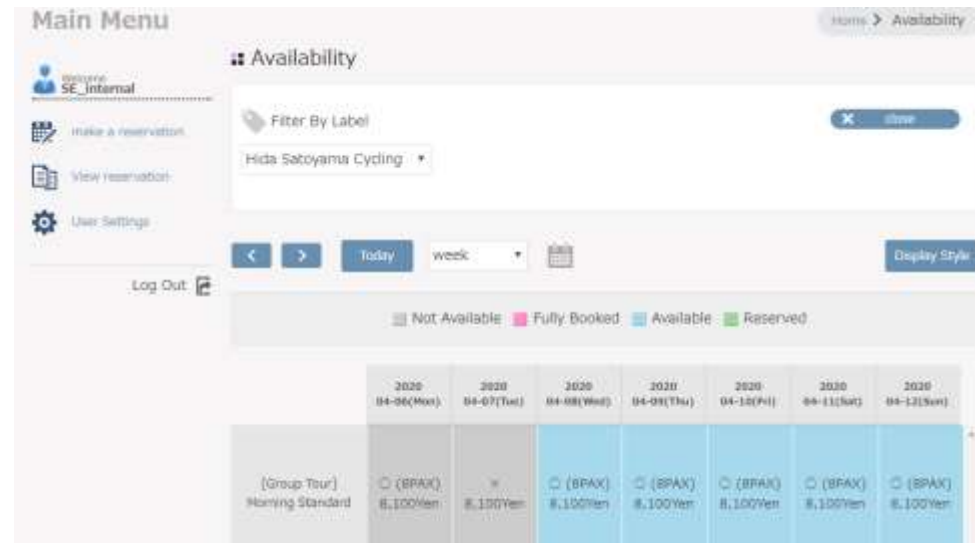
PRACTICAL INFORMATION

How to make a reservation

Reservations for tours and rooms can be made or changed quickly and easily online 24h/7d.

*We will provide an individual ID & password at the time of your first reservation

*If there is no availability on your preferred dates/times, please send an email to reservation@satoyama-experience.com and we will try our best to accommodate you.



Online booking : <https://bit.ly/2syZ0rO>

Reservation desk

Please feel free to ask any questions or make any arrangements by emailing us at:
reservation@satoyama-experience.com
Opening Hours: 9:00 – 17:00 (closed on weekends and holidays).

Additional arrangements

We will be delighted to assist with any arrangements in this area, such as taxis, buses and meals.
Please send a note when you make a booking online.

Tours by season - 2022

Category	Tour	AM/PM	Jan	Feb	Mar	Apr	May	Jun	Jul	Aug	Sep	Oct	Nov	Dec	
Cycling	STANDARD	AM			3/20-									-11/30	
		PM									-9/30	private only *1	-10/31		
	HALF	AM				private only								-12/20	
		PM				private only								10/1	private & group only *2
	RIDE & HIKE E-BIKE & HIKE					5/1-		-7/15	8/21		-9/30				
	FOOD + CYCLING					3/20-									-12/20
Crafts, Cuisine & Culture	FOOD WALK CRAFT WALK FURUKAWA TOWN WALK HIDA CUISINE COOKERY CLASS*4		1/5-	ALL YEAR ROUND											-12/30
	THE ART OF CRAFTSMANSHIP		1/10-	ALL YEAR ROUND											-12/24
	HIDA CAMPING TOUR					5/1-							-10/15		
	JAPAN ALPS SNOWSHOEING		1/10-	- 2/27	This tour is currently under consideration.										
Winter	SATOYAMA SNOWSHOEING		1/6-	- 2/27											

*1: STANDARD PM Private tour in Oct. is run between 13:15-16:45

*2: HALF PM Private tour in Dec. is run between 13:15-15:45

For families with children

Please check the guidelines below regarding which tours we consider are appropriate for children of various ages

Category	Tour	2 – 5 years old	6 – 9 years old	10 years old or above
Cycling	STANDARD	×	✓ (135cm+)	✓
	HALF	✓ (125cm+ / 135cm+ if joining the group tour / Child seat* if the child cannot ride a bike)	✓ (125cm+ / 135cm+ if joining group tour)	✓
	RIDE & HIKE** E-BIKE & HIKE**	×	×	13 years or above (RIDE & HIKE:145cm+) (E-BIKE & HIKE:156cm+)
	FOOD WALK + CYCLING	✓ (125cm+ / Child seat* if the child cannot ride a bike)	✓ (125cm+)	✓
Crafts, Cuisine & Culture	FOOD WALK CRAFT WALK THE ART OF CRAFTMANSHIP FURUKAWA TOWN WALK HIDA CUISINE COOKERY CLASS***	✓ (No charge / Nothing served)	✓	✓
	HIDA CAMPING TOUR	✓ (“No charge/Nothing served” can be arranged on request)	✓	✓
Winter	JAPAN ALPS SNOWSHOEING	×	×	✓ (22.5cm+ in shoe size)
	SATOYAMA SNOWSHOEING	×	✓ (own waterproof boots)	✓ (own waterproof boots OR 24cm+ in shoe size)

Notes:

*Child seat: Children must be under 110 cm in height and 20 kg in weight.




**RIDE & HIKE, E-BIKE & HIKE: It should be noted that the route contains a long uphill slope and is designed for active people.

*** Cookery Class: Only for parents who can easily control their children during the class since kitchen knives and fire stoves are used.

Where do the tours start?

We have various tour operation points and meeting points, which differ depending on the tour.

Please check the meeting point on the corresponding tour page as well as our confirmation sheet and share these details with your clients.

Tour	FOOD WALK CRAFT WALK	JAPAN ALPS SNOWSHOEING	THE ART OF CRAFTMANSHIP	CYCLING TOURS SATOYAMA SNOWSHOEING HIDA FURUKAWA TOWN WALK COOKERY CLASS HIDA CAMPING TOUR
Start at	Takayama Jinya 	Nouhi Bus Center 	iCAFE TAKAYAMA 	Hida Furukawa Office (SATOYAMA STAY NINO-MACHI) 
Access	10 mins from Takayama Station on foot	Next to Takayama Station	Takayama Station 1F	15 mins from Takayama by JR train and 8 mins walk from Hida Furukawa Station
The nearest station	JR Takayama Station			JR Hida-Furukawa station

Notes for tours

Please read these terms and conditions carefully and explain them to your clients before booking.

Insurance

Please be sure to purchase appropriate travel insurance in advance.

In Case of Bad Weather/Conditions

SATOYAMA EXPERIENCE tours are all-weather events. Please note, however, that some tours may not take place due to extreme weather or bad conditions. In such cases, we will contact customers and suggest an alternative, such as the Town Walk tour.

When we decide to cancel a tour in advance due to adverse weather conditions, tour fees will be refunded. However, if we decide that conditions are satisfactory for a tour to proceed, no refund will be provided on cancellation by the customer.

Cycling tours

- Tour participants must be able to ride a mountain bike. We recommend that guests without recent experience of riding a mountain bike familiarise themselves through training rides before their trip. Children under 12 years old should have sufficient recent experience of riding a bike without training wheels. If we believe that a tour participant is a risk to themselves and others through inability to safely ride and control a bike, we may decide that participation in the tour is not appropriate.
- Tour participants must wear clothing suitable both for cycling and the weather
- Please arrive at least 10 minutes before the scheduled tour start time.
All tours depart on time and we cannot wait for latecomers.
- In Japan, it is not recommended for pregnant women to ride a bike.



Cancellation Policy

Cancellation fees apply as follows:

TOURS	4-7 days notice: 30% of total charge 24 to 72 hours prior to the tour time: 50% of total charge Within 24 hours of the tour time / No Show: 100% of total charge
SATOYAMA STAY	30 – 22 days before stay: 20% of total charge 21 – 15 days before stay: 30% of total charge 14 – 8 days before stay: 50% of total charge 7 days before stay/No Show: 100% of total charge



SATOYAMA STAY IS ACCEPTING BOOKINGS NOW!
Get on board with our exciting new venture!

satoyama-experience.com
sales@satoyama-experience.com

11-31 Ninomachi, Furukawa-cho, Hida City, Gifu Japan, 509-4235
+81-577-73-5715
Travel Agency License No: Gifu prefecture 3-298



*Note: Information in this document is subject to change without notice